

Suzuka Gawa Suikui Utsube Gawa, Kamatani Gawa, Ashimi Gawa Flood Escape Map

This data (information) is current as of July 2022.

Use the Escape Map to
Protect Yourself

Where to escape at **Alert Level 3** Evacuation of the Elderly, Etc. or **Alert Level 4** Evacuation Instruction
Ex: **A relative/friend's home, evacuation shelter, etc. in non-inundated area**

Where to stay safe if you did not escape in time
Ex: **Tall and sturdy building where you can stay even after flooding**

Use the flow diagram on the bottom left!

*This Escape Map was created by superimposing the Flood-Prone Area Maps below.
*Check the Awareness Map on the "Information" side as to which river(s) will affect your residential area.

Suzuka Gawa Suikui Suzuka Gawa, Kamatani Gawa, and Ashimi Gawa Flood-Prone Area Map (maximum rainfall scenario)
Precedent rainfall for designation:
24-hour total rainfall in Utsube Gawa Ryuki: 797 mm
24-hour total rainfall in Kamatani Gawa Ryuki: 836 mm
Released: May 27, 2020
Prepared by: Mie Prefecture URL: <http://www.pref.mie.lg.jp/>

Suzuka Gawa Suikui Utsube Gawa Flood-Prone Area Map (maximum rainfall scenario)
Precedent rainfall for designation:
6-hour total rainfall in Suzuka Gawa Ryuki: 391 mm
Released: May 31, 2016
Prepared by: Mie River and National Highway Office; Chubu Regional Development Bureau; Ministry of Land, Infrastructure, Transport and Tourism URL: <https://www.chd.mlit.go.jp/mie/>

Tenpaku Gawa Suikui Tenpaku Gawa and Kabake Gawa Flood-Prone Area Map (maximum rainfall scenario)
Precedent rainfall for designation:
24-hour total rainfall in Tenpaku Gawa Ryuki: 829 mm
Released: May 7, 2019
Prepared by: Mie Prefecture URL: <http://www.pref.mie.lg.jp/>

Find Out Water Level

Utsube Gawa (Downstream)
Kawarada
water gauging station
Kawaradacho (50 m upstream of Kawarada Bashi on the right river bank)
River flooding risk water level **2.80m**
Evacuation alert water level **2.50m**
River flooding warning water level **1.90m**
Flood fighting corps standby water level **1.10m**

Ministry of Land, Infrastructure, Transport and Tourism's Disaster Information for River
<https://www.river.go.jp>

National and prefectural water gauging stations
Utsube Gawa: Dogayama Suikansokujo
*You can also view water levels at other water gauging stations and water level gauges.

Yokkaichi shi Bousai Kishou Jouhou
<https://yokkaichi-city.bosai.info/>

Yokkaichi shi water gauging stations
Utsube Gawa: Kitakomatsu Suikansokujo

List of Designated Evacuation Shelters

Designated evacuation shelters are buildings that fulfill a central role as evacuation points and are also meant for long-term stays.

*For the latest information on the designated evacuation shelters' availability during flooding and the number of accessible floors, please check the community disaster plan and any future hazard maps.

Barrier-free facilities

Multi-purpose toilet available / Western toilet available / Elevator available / Staircase handrail available / Slope available

Name	Applicable disaster type		Barrier-free facilities				
	Flood (accessible floor)	Sediment disaster	Multi-purpose toilet	Western toilet	Elevator	Handrail	Slope
Suzawa Shogakko	○	○	○	○	○	○	○
Suzawa Shogakko	○	○	○	○	○	○	○
Oyamadachiku Shimin Center	○	○	○	○	○	○	○
Oyamada Shogakko	○	○	○	○	○	○	○
Seiryu Chugakko	○	○	○	○	○	○	○
Utsubechiku Shimin Center*	○ [2nd floor]	○	○	○	○	○	○
Utsube Shogakko*	○ [2-3 floors]	○	○	○	○	○	○
Utsube Shogakko	○	○	○	○	○	○	○
Utsube Chugakko	○ [2-3 floors]	○	○	○	○	○	○
Yokkaichi Shimin Center	○	○	○	○	○	○	○
Takananadaira Shogakko	○	○	○	○	○	○	○
Kenritsu Yokkaichi Yogo Koko	○	○	○	○	○	○	○
Yogo Shogakko	○	○	○	○	○	○	○
Nishissagawa Chugakko	○	○	○	○	○	○	○
Sasagawa Shogakko	○	○	○	○	○	○	○
Kawashima Shogakko	○	○	○	○	○	○	○

*Not available in case of an emergency warning disaster

Maps viewable on a computer or smartphone

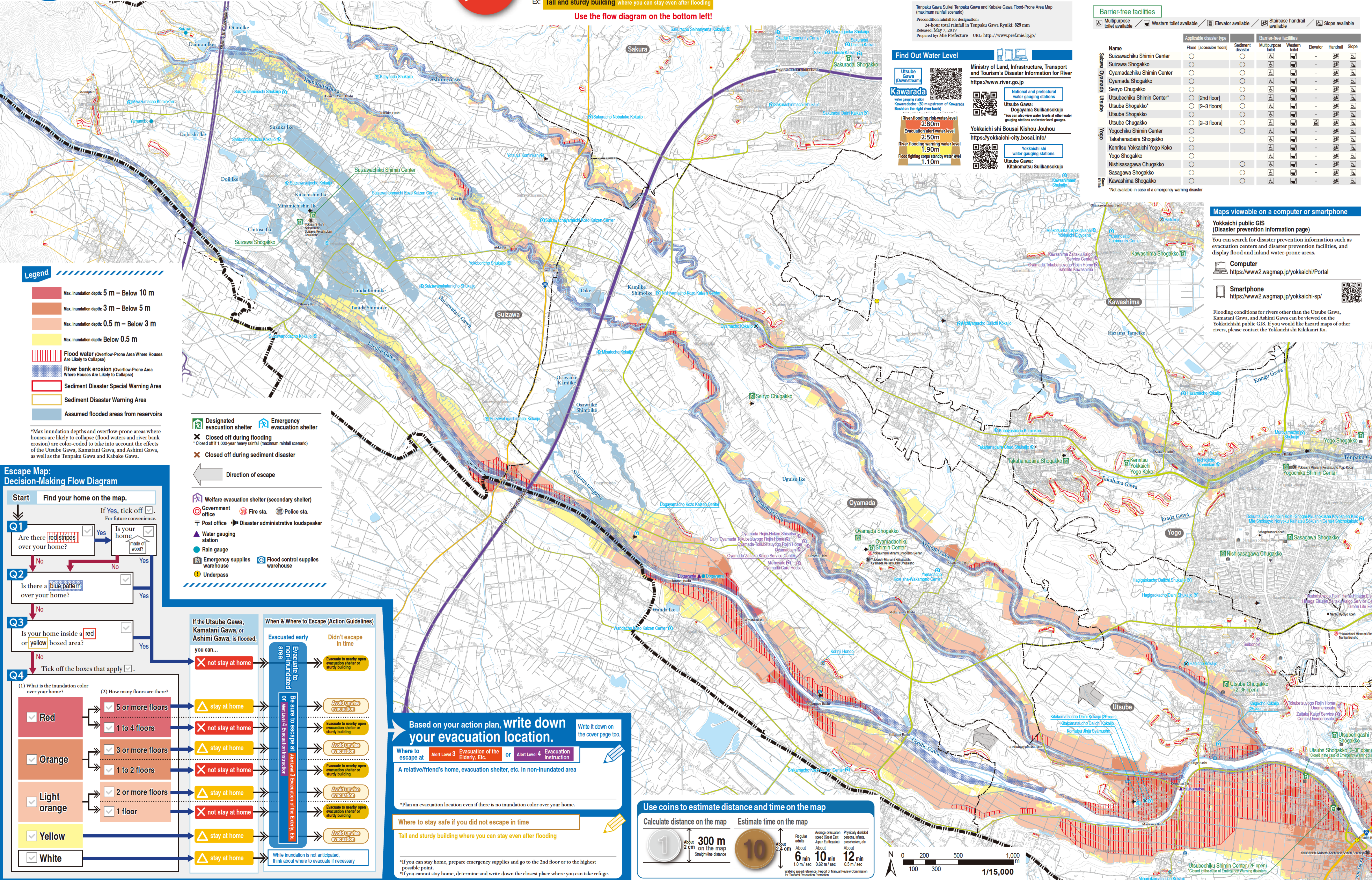
Yokkaichi public GIS (Disaster prevention information page)

You can search for disaster prevention information such as evacuation centers and disaster prevention facilities, and display flood and inland water-prone areas.

Computer
<https://ww2.wagmap.jp/yokkaichi/Portal>

Smartphone
<https://ww2.wagmap.jp/yokkaichi-sp/>

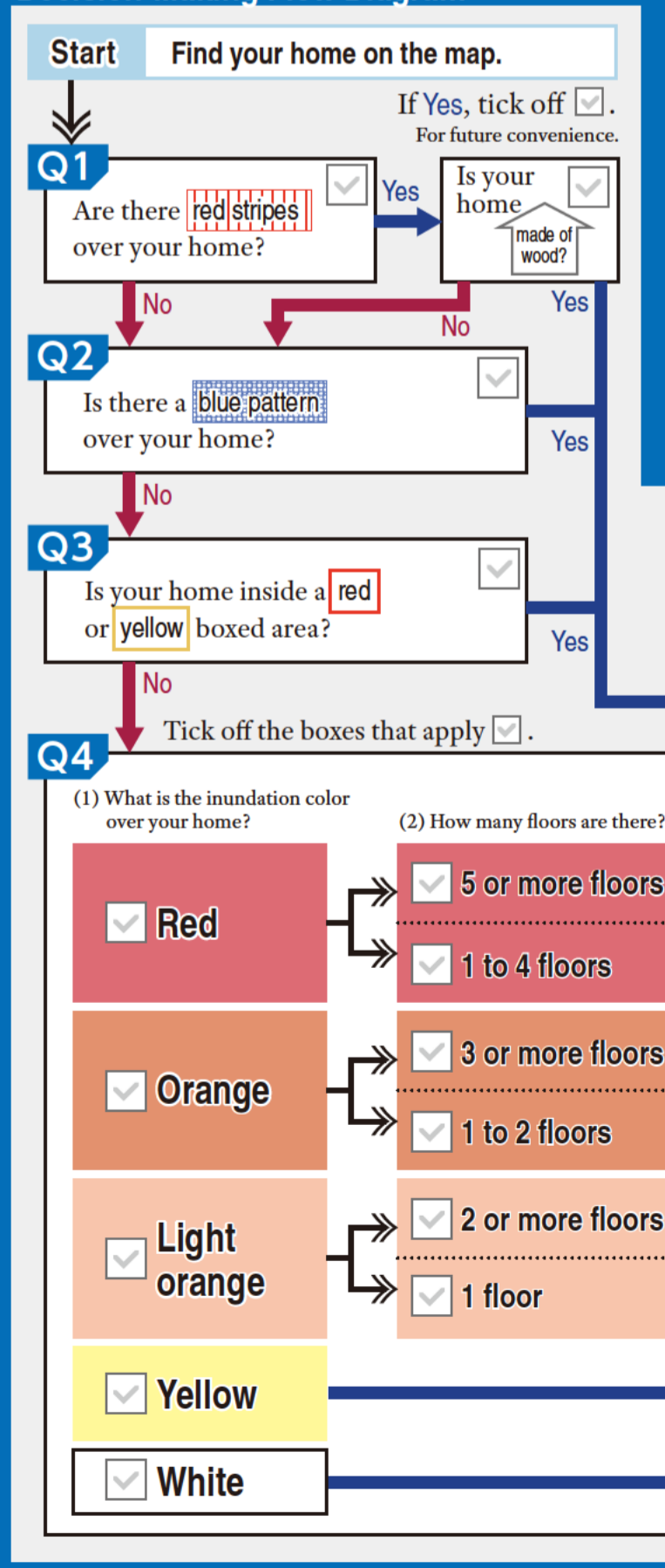
Flooding conditions for rivers other than the Utsube Gawa, Kamatani Gawa, and Ashimi Gawa can be viewed on the Yokkaichi public GIS. If you would like hazard maps of other rivers, please contact the Yokkaichi shi Kikikanri Ka.



Legend

- Max. inundation depth: 5 m – Below 10 m
- Max. inundation depth: 3 m – Below 5 m
- Max. inundation depth: 0.5 m – Below 3 m
- Max. inundation depth: Below 0.5 m
- Flood water (Overflow-Prone Area Where Houses Are Likely to Collapse)
- River bank erosion (Overflow-Prone Area Where Houses Are Likely to Collapse)
- Sediment Disaster Special Warning Area
- Sediment Disaster Warning Area
- Assumed flooded areas from reservoirs

Escape Map: Decision-Making Flow Diagram



Designated evacuation shelter (Green house icon)

Emergency evacuation shelter (Blue house icon)

Closed off during flooding (Red X icon)

Closed off during sediment disaster (Red X icon)

Direction of escape (Arrow icon)

Welfare evacuation shelter (secondary shelter) (Star icon)

Government office (Building icon)

Fire sta. (Fire icon)

Police sta. (Police icon)

Post office (Post icon)

Disaster administrative loudspeaker (Speaker icon)

Water gauging station (Gauge icon)

Rain gauge (Gauge icon)

Emergency supplies warehouse (Warehouse icon)

Flood control supplies warehouse (Warehouse icon)

Underpass (Arrow icon)

Based on your action plan, write down your evacuation location.

Where to escape at **Alert Level 3** Evacuation of the Elderly, Etc. or **Alert Level 4** Evacuation Instruction

A relative/friend's home, evacuation shelter, etc. in non-inundated area

Where to stay safe if you did not escape in time

Tall and sturdy building where you can stay even after flooding

*Plan an evacuation location even if there is no inundation color over your home.

*If you can stay home, prepare emergency supplies and go to the 2nd floor or to the highest possible point.

*If you cannot stay home, determine and write down the closest place where you can take refuge.

Use coins to estimate distance and time on the map

Calculate distance on the map

1 coin: About 2 cm on the map. Straight-line distance. 300 m

10 coins: About 20 cm on the map. Straight-line distance. 3,000 m

Estimate time on the map

Regular adults: About 6 min (1.0 m/sec)

Physically disabled persons, infants, preschoolers, etc.: About 10 min (0.82 m/sec)

Walking speed reference: Report of Manual Review Commission for Tsunami Evacuation Promotion

Sections of this hazard map are based on the Digital Map (Basic Geospatial Information), the Digital Map (Basic Geospatial Information 200000), and Fundamental Geospatial Data published by the Geospatial Information Authority of Japan (GSI), with approval obtained from the GSI Director General. (Use) Approved by GSI Director General based on Survey Act 234th article.