

Asake River Flood Escape Map

This data (information) is current as of June 1, 2020.

Warning Level 3
Where to escape if directed to begin evacuation preparation and evacuation of seniors, etc. or if an evacuation advisory is issued
Ex: Evacuation shelter, home of a relative / friend, etc. that will not be flooded

Warning Level 4
Where to stay safe if you did not escape in time
Ex: Tall and sturdy building where you can stay even after flooding

Answer the questions in "When & Where to Escape" on the bottom left to determine your evacuation points!

*This Escape Map is based on the following flood-prone area maps.
*The Katzo River System Katzo River Flood-Prone Area Map (maximum rainfall scenario: released September 22, 2017) displays only expected inundation areas.
Check the Awareness Map on the "Information" side as to which river(s) will affect your residential area.

Asake River System Asake River Flood-Prone Area Map (maximum rainfall scenario) Released March 21, 2017
Prepared by Mie Prefecture URL <http://www.pref.mie.lg.jp/>

Assumed rainfall for specification: 24-hour total rainfall: 752 mm (Asake River basin)

Legend

- Designated evacuation shelter
- Emergency evacuation shelter
- Closed off during flooding
- Closed off if 1,000-year heavy rainfall (maximum rainfall scenario)
- Closed off during sediment disaster
- Welfare evacuation shelter (secondary shelter)
- Government office
- Fire sta.
- Police sta.
- Water gauging station
- Rain gauge station
- Emergency supplies warehouse
- Flood control supplies warehouse
- Underpass
- Sediment Disaster Special Warning Area
- Sediment Disaster Warning Area
- Expected Inundation Area
- Terpaku, Kabake, Mitaki Rivers
- Direction of escape

Find Out Water Level

Asake River (Upstream) water gauging station
Asake River (Downstream) water gauging station

MLIT Disaster Information for River <http://www.river.go.jp>

National government's water gauging station
Yonal River: Shirasaka water gauging station

Yokkaichi City Disaster Weather Information <http://yokkaichicity.bosai.info>

Yokkaichi City's water gauging stations
Juishi River: Tomida water gauging station
Yonal River: Betsuami water gauging station

River flooding risk water level
Evacuation alert water level
River flooding warning water level
Flood fighting corps standby water level

When & Where to Escape

Find your home on the map. Check the inundation pattern and color for that location and answer the questions in order, beginning with Q1. Once you find out the result, find evacuation points on the map, such as an evacuation shelter or home of a relative, friend, etc. that will not be flooded, and a tall and sturdy building where you can stay even after flooding, and write them down in the evacuation points memo!

Q1 Is there a [red] pattern?
Wooden houses may be destroyed due to fast currents. Wooden structures collapse.
Result: Cannot stay after inundation. MUST evacuate before inundation.

Q2 Is there a [blue] pattern?
The ground may erode during flooding. Inundation could last around one week.
Result: Cannot stay after inundation. MUST evacuate before inundation.

Q3 Is it inside [red] or [orange]?
There is a risk of sediment disaster that could collapse your house or put your life in danger.
Result: Cannot stay after inundation. MUST evacuate before inundation.

Q4 What is the inundation color and the number of floors in the building?
Inundation color: 3F-4F (5m to less than 10m) → 5 or more floors → Can stay after inundation. Evacuate before inundation.
Inundation color: 3F-4F (3m to less than 5m) → 1 to 4 floors → Cannot stay after inundation. MUST evacuate before inundation.
Inundation color: 2F (2F floor to under 2F eaves flooded) → 3 or more floors → Can stay after inundation. Evacuate before inundation.
Inundation color: 2F (2F floor to under 2F eaves flooded) → 1 to 2 floors → Cannot stay after inundation. MUST evacuate before inundation.
Inundation color: 1F (0.5 m to less than 3 m) → 2 or more floors → Can stay after inundation. Evacuate before inundation.
Inundation color: 1F (0.5 m to less than 3 m) → 1 floor → Cannot stay after inundation. MUST evacuate before inundation.
Inundation color: Under 1F floor (Less than 0.5 m) → All floors → Can stay after inundation. Evacuate before inundation.

Use the Escape Map to Protect Yourself

Warning Level 3: Where to escape if directed to begin evacuation preparation and evacuation of seniors, etc. or if an evacuation advisory is issued
Ex: Evacuation shelter, home of a relative / friend, etc. that will not be flooded

Warning Level 4: Where to stay safe if you did not escape in time
Ex: Tall and sturdy building where you can stay even after flooding

Answer the questions in "When & Where to Escape" on the bottom left to determine your evacuation points!

*This Escape Map is based on the following flood-prone area maps.
*The Katzo River System Katzo River Flood-Prone Area Map (maximum rainfall scenario: released September 22, 2017) displays only expected inundation areas.
Check the Awareness Map on the "Information" side as to which river(s) will affect your residential area.

Asake River System Asake River Flood-Prone Area Map (maximum rainfall scenario) Released March 21, 2017
Prepared by Mie Prefecture URL <http://www.pref.mie.lg.jp/>

Assumed rainfall for specification: 24-hour total rainfall: 752 mm (Asake River basin)

List of Designated Evacuation Shelters

Designated evacuation shelters are buildings that fulfill a central role as evacuation points and are also meant for long-term stays.
*The designated evacuation shelters' availability during flooding and the number of accessible floors are indicated based on the Asake River System Asake River Flood-Prone Area Map. For the latest information, see the community disaster plan and any hazard maps that are created.

Name	Applicable disaster type		Barrier-free facilities					
	Flood (accessible floors)	Sediment disaster	Multipurpose toilet available	Western toilet available	Elevator	Handrail	Slope	
Hobo Civic Center	○ [2 floors]	○	☑	☑	☑	☑	☑	
Hobo Elementary School	○ [2-3 floors]	○	☑	☑	☑	☑	☑	
Hobo Junior High School	○ [2-3 floors]	○	☑	☑	☑	☑	☑	
Prefectural Asake High School	○	○	☑	☑	☑	☑	☑	
Shimono Civic Center	○ [2 floors]	○	☑	☑	☑	☑	☑	
Shimono Elementary School	○ [2-3 floors]	○	☑	☑	☑	☑	☑	
Nishi-Asake Junior High School	○ [2-3 floors]	○	☑	☑	☑	☑	☑	
Yasato Civic Center *	○ [2 floors]	○	☑	☑	☑	☑	☑	
Private Atsuki Gakuen (8-year junior high school)	○ [2 floors]	○	☑	☑	☑	☑	☑	
Private Atsuki Gakuen (3-year high school)	○ [2 floors]	○	☑	☑	☑	☑	☑	
Yasato Nishi Elementary School	○ [2-4 floors]	○	☑	☑	☑	☑	☑	
Yasato Elementary School	○ [2-4 floors]	○	☑	☑	☑	☑	☑	
Asake Junior High School	○	○	☑	☑	☑	☑	☑	
Mie Kita Elementary School	○	○	☑	☑	☑	☑	☑	
Prefectural School Hokusei Kirara Gakuen	○	○	☑	☑	☑	☑	☑	

* Not open for emergency warning disaster

Barrier-free facilities

Multipurpose toilet available ☑ Western toilet available ☑ Elevator available ☑ Staircase handrail available ☑ Slope available ☑

Name	Applicable disaster type		Barrier-free facilities					
	Flood (accessible floors)	Sediment disaster	Multipurpose toilet	Western toilet	Elevator	Handrail	Slope	
Oyachi Civic Center	○ [2 floors]	○	☑	☑	☑	☑	☑	
Oyachi Kojo Elementary School	○ [2-3 floors]	○	☑	☑	☑	☑	☑	
Asake Plaza	○ [2-4 floors]	○	☑	☑	☑	☑	☑	
Private Atsuki Gakuen Atsuki Elementary School	○ [2-3 floors]	○	☑	☑	☑	☑	☑	
Tomida Civic Center	○ [2 floors]	○	☑	☑	☑	☑	☑	
Tomida Elementary School	○ [2-4 floors]	○	☑	☑	☑	☑	☑	
Prefectural Yokkaichi High School	○ [2-3 floors]	○	☑	☑	☑	☑	☑	
Tomida Junior High School	○ [2-4 floors]	○	☑	☑	☑	☑	☑	
Prefectural Hokusei High School	○ [2 floors]	○	☑	☑	☑	☑	☑	
Tomisuhara Civic Center	○ [2 floors]	○	☑	☑	☑	☑	☑	
Tomisuhara Junior High School	○ [3 floors]	○	☑	☑	☑	☑	☑	
Tomisuhara Elementary School	○ [3 floors]	○	☑	☑	☑	☑	☑	
Hazu Elementary School	○	○	☑	☑	☑	☑	☑	
Hazu Kita Elementary School	○	○	☑	☑	☑	☑	☑	
Hazu Junior High School	○	○	☑	☑	☑	☑	☑	

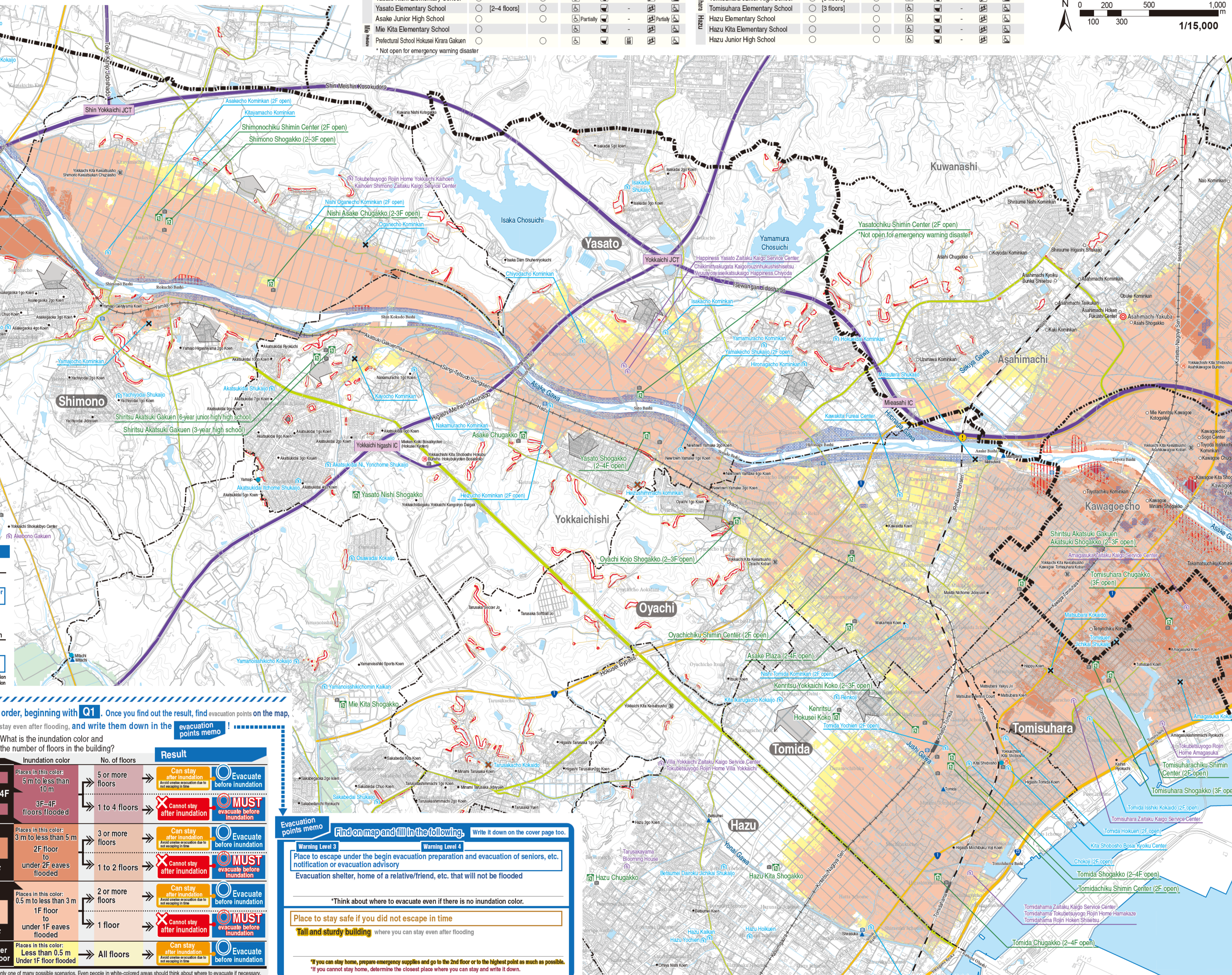
Use coins to estimate distance and time on the map

Calculate distance on the map
1 coin = 300 m on the map

Estimate time on the map
10 coins = 3000 m = 3 km
Average evacuation speed: 1.0 m/sec (0.62 mi/sec) = 6 min
Physically disabled persons, infants, preschoolers, etc.: 0.5 m/sec = 12 min

Walking speed reference: Report of Manual Review Commission for Tsunami Evacuation Prediction

Scale: 1/15,000



Sections of this hazard map are based on the Digital Map (Basic Geospatial Information 20000) and Fundamental Geospatial Data published by the Geospatial Information Authority of Japan (GSI), with approval obtained from the GSI Director General (Approval No. 447 FY2019 information usage). Sections of this hazard map are based on the "National Land Numerical Information (River Data, Emergency Transport Road, Railway, Municipal Office, Police Department, Fire Department), Ministry of Land, Infrastructure, Transport and Tourism."