

Suzuka Gawa Suikei Utsube Gawa Kamatani Gawa Ashimi Gawa Flood

Yokkaichi shi Hazard Map

July 2022

Protect Your Life
Not only evacuation shelters
Evacuate and
respond flexibly
based on the situation

Plan your evacuation location, which may be your home or a relative/friend's home (if risk of flooding is low).
It is up to you to save your life!



Find on Escape Map and fill in the following.

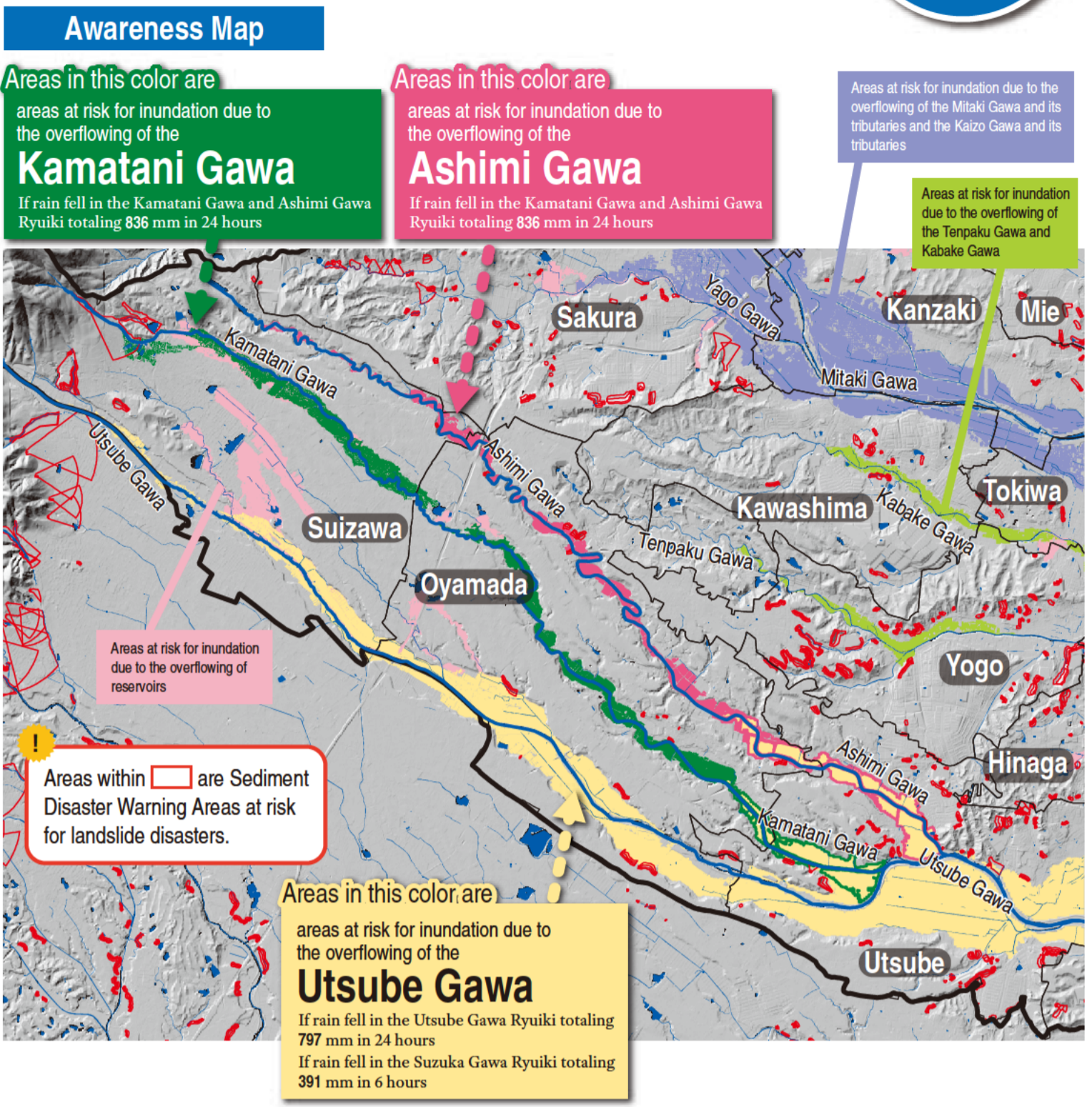
Place for early evacuation Prior to an evacuation alert or strong rain/wind
A relative/friend's home, evacuation shelter, etc. in non-inundated area
(Write here)

Place to evacuate to if did not escape in time If going outside is dangerous
Tall and sturdy building where you can stay after flooding
(Write here)

Published by: Yokkaichi shi Produced and Edited by: Yokkaichi shi Kikikanri Ka, Institute of Social Technology, IGA Co., Ltd.
Supervised by: Toshitaka Katada (Project Professor, Graduate School of Interdisciplinary Information Studies, The University of Tokyo)
Distributed in: [All homes] Oyamadachiku, Suzuwachiku, Utsubechiku
Inquiries: Yokkaichi shi Kikikanri Ka
TEL: 059-354-8119
FAX: 059-350-3022

Anticipated disasters in addition to the overflowing of the Utsube Gawa, Kamatani Gawa, and Ashimi Gawa.

This map is colored based on the Suzuka Gawa Suikei, Tenpaku Gawa Suikei, Mitaki Gawa Suikei, and Kaizo Gawa Suikei Flood-Prone Area Maps, Storm Surge-Prone Area Maps, and Sediment Disaster Warning Area Maps.

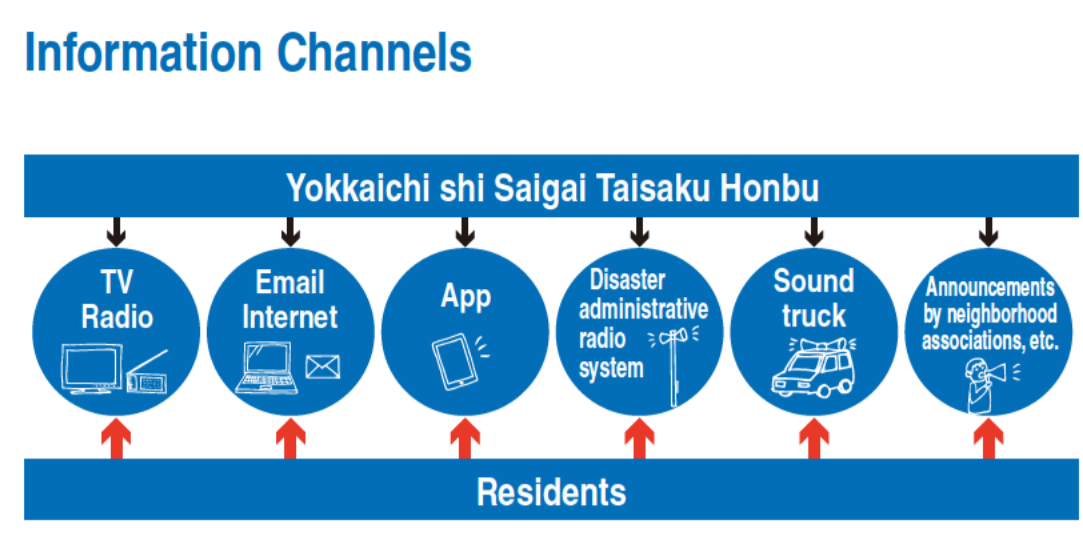


Use the Awareness Map to
Check how the disasters will affect you

Unforeseen events are inevitable in disasters. The overflowing of rivers is not the only disaster. Areas that are not colored also face risks, such as water accumulation due to poor drainage caused by heavy rain.
Please act on your own judgment if you sense danger; do not feel bound by this scenario.

Collect information proactively

If an approaching typhoon or heavy rain due to low pressure, etc. is anticipated, weather and various other information will be announced. Make sure you stay informed and do not miss important information.



Information Sources

Internet

Weather information, precipitation, river water level, tide level

Yokkaichi shi Bousai Kishou Jouhou
Yokkaichi City's weather, warning and alert statuses, precipitation, river level observation data, etc.
URL: <https://yokkaichi-city.bosai.info/>

BOSAIMIE.jp
Mie Prefecture's weather, warning and alert statuses, precipitation, river level observation data, etc.
URL: <https://www.bosaimie.jp>

CTY-NET Online
Live webcam images of Mitaki Gawa, Kaizo Gawa, Kabake Gawa, etc. (refresh every 1 minute).
URL: <https://www.cty-net.jp/>

Japan Meteorological Agency
Weather warnings and alerts, typhoon information, earthquake and tsunami information, etc.
URL: <https://www.jma.go.jp>

Ministry of Land, Infrastructure, Transport and Tourism's Disaster Information for River
Weather warnings and alerts, typhoon information, earthquake and tsunami information, etc.
URL: <https://www.river.go.jp>

River Water Level Information (crisis management-type water level gauge)
(Foundation of River & Basin Integrated Communications (FRICS))
Observed values of crisis management-type water level gauges, etc.
URL: <https://k.river.go.jp>

TV and Radio

TV
Digital terrestrial: NHK 3ch
Cable TV: CTY *Requires subscription
button on TV remote (data broadcasting)

Radio
AM: NHK Nagoya 1 729kHz
FM: CTY-FM 76.8MHz, NHK-Tsu FM 81.8MHz, radio3 FM Mie 78.9MHz

Evacuation Information

The City will announce evacuation information if evacuation is necessary. To receive the information, pre-register for the Yokkaichi shi Anzen Anshin mail service.

Alert Level	Information to prompt action	Situation	Actions residents should take
Alert Level 5	Emergency Safety Measures	Disaster occurred or imminent	Your life is in danger. Secure safety immediately!
Alert Level 4	Evacuation Instruction	High risk of disaster	All residents should evacuate from affected areas
Alert Level 3	Evacuation of the Elderly, Etc.	Risk of disaster	Elderly people and others should evacuate from affected areas

Be sure to evacuate by Alert Level 4!
Alert Level 5 is rarely issued. Be sure to evacuate from affected area without waiting for Alert Level 5! *The City strives to accurately grasp the severity of a disaster.

*Some mobile phone models are incompatible. Please contact your mobile phone company for details.

Email Notifications

Emails on evacuation information, etc. Pre-register

Yokkaichi shi Anzen Anshin mail
Scan the QR code on the right and follow the instructions to register.

Emergency Alert Email (Area Mail) Registration not required
Evacuation advisory and other information is sent by "Emergency Alert Email (Area Mail)" to compatible mobile phones.
*Some mobile phone models are incompatible. Please contact your mobile phone company for details.

PC Email
<https://plus.sugumail.com/user/yokkaichi/home>

App and Internet

Evacuation and other information sent via app Scan QR code to download app

Yokkaichi City S Alert
Obtain evacuation and other information distributed by Yokkaichi City.

iPhone, iPad, Android

Information on establishment of evacuation shelters and their congestion levels

Evacuation shelter congestion information website
Check vacancy and congestion level of designated evacuation shelters.
URL: <https://vacan.com/area/yokkaichi-city-evacuation/evacuation-center/1>

Telephone

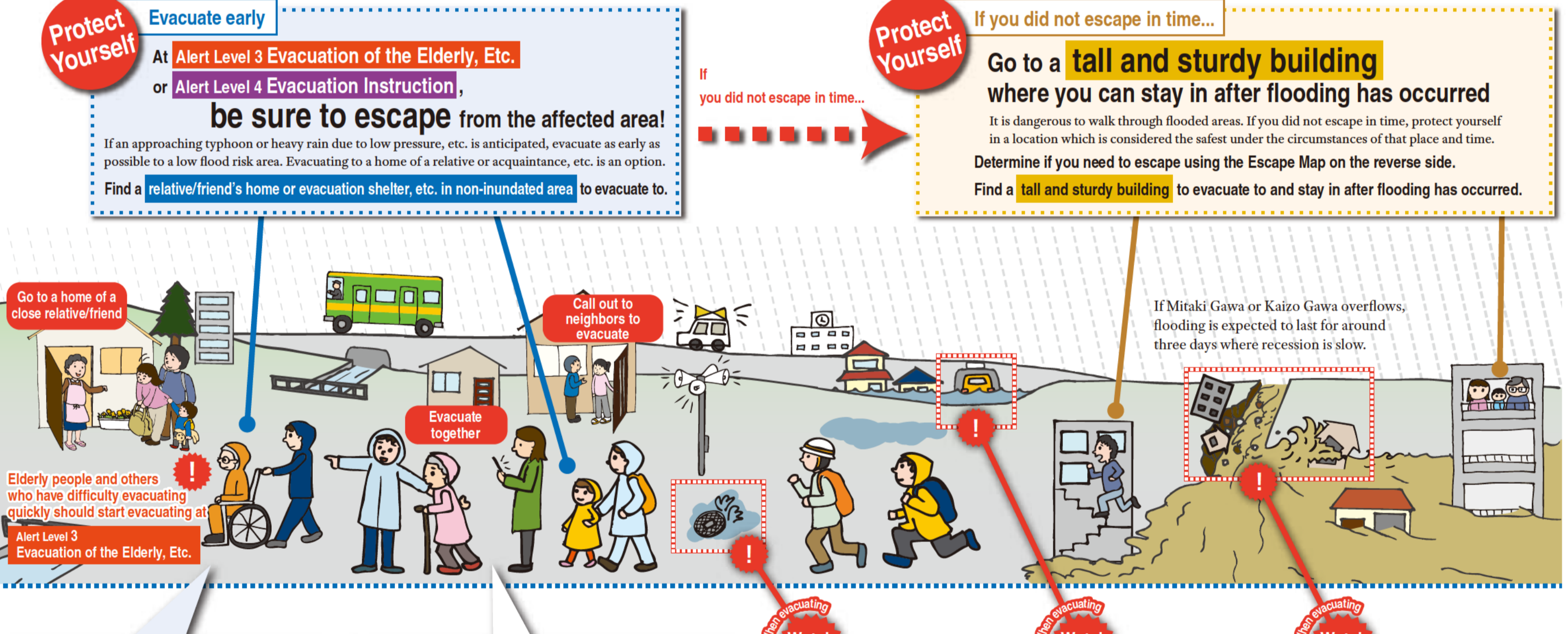
Disaster siren and voice broadcasting confirmation

Automated telephone response for confirming siren and voice broadcasting information.

TEL: 059-351-4004

Protect Yourself from Flooding

As a primary rule, you must evacuate to a safe location early on. If you did not escape in time, protect yourself in a location which is considered the safest under the circumstances of that place and time.



Escape Map: Decision-Making Flow Diagram

It is best to evacuate early before flooding starts. But in case you did not escape in time, be sure to check if you can evacuate to the second floor of your home or the like. Staying in your home may endanger your life. Determine if you need to evacuate to an evacuation shelter or other locations before flooding starts.

Start Find your home on the map.

Q1 Are there red stripes over your home?
(Overflow-Prone Area Where Houses Are Likely to Collapse)
Wooden houses may collapse due to fast-moving water.
Yes: Is your home made of wood? Yes: not stay at home. No: Evacuate to nearby open evacuation shelter or sturdy building.
No: Evacuate to nearby open evacuation shelter or sturdy building.

Q2 Is there a blue pattern over your home?
(Overflow-Prone Area Where Houses Are Likely to Collapse)
The ground may crumble during flooding.
Yes: Reinforced concrete structures also collapse. No: Evacuate to nearby open evacuation shelter or sturdy building.

Q3 Is your home inside a red or yellow boxed area?
Sediment disaster Special Warning Area, Sediment Disaster Warning Area, Debris flow, Cliff collapse, Landslide.
Yes: Sediment disaster may collapse your house or endanger your life. No: Evacuate to nearby open evacuation shelter or sturdy building.

Q4 (1) Which inundation color below corresponds to your home? (2) How many floors is your home? If it's an apartment, what floor is your home?

Inundation Color	Water Level	Home Height	Action
Red	Water level: 3rd level floor - 4th level floor	5 or more floors	stay at home
Orange	Water level: 2nd level floor - 2nd level eaves	3 or more floors	not stay at home
Light orange	Water level: 1st level floor - 1st level eaves	1 to 2 floors	stay at home
Yellow	Water level: Below 0.5 m	1 to 2 floors	not stay at home
Yellow	Water level: Below 0.5 m	2 or more floors	stay at home
Yellow	Water level: Below 0.5 m	1 floor	not stay at home
Yellow	Water level: Below 0.5 m	1 floor	stay at home
White	Inundation is not anticipated	All floors	stay at home

When & Where to Escape (Action Guidelines)

Evacuated early: Evacuate to non-inundated area. Didn't escape in time: Evacuate to nearby open evacuation shelter or sturdy building.

Be sure to escape at Alert Level 3 Evacuation of the Elderly, Etc. or Alert Level 4 Evacuation Instruction

Avoid unwise evacuation. Evacuate to nearby open evacuation shelter or sturdy building.

While inundation is not anticipated, think about where to evacuate if necessary.

See the escape map on the reverse side to find and decide where to evacuate

Write down where you will evacuate on the cover page!

Where to escape at: Alert Level 3 Evacuation of the Elderly, Etc. or Alert Level 4 Evacuation Instruction

Ex: A relative/friend's home, evacuation shelter, etc. in non-inundated area

Where to stay safe if you did not escape in time

Ex: Tall and sturdy building where you can stay even after flooding

Points to keep in mind for staying home

Take refuge above flood level

You may not be able to use water, electricity, gas, toilet, etc. for around a week. Be sure you are fully ready and know that you may become isolated for a long time.

Stockpile water, food, and other emergency supplies on high-up areas that won't be flooded.

It is dangerous to stay at flood level. Evacuate to a place where you can safely protect yourself from flooding, such as the upper floors of a building.

Check the Family Disaster Planner and the Tsunami Evacuation Map.

- Check how to protect yourself from a natural disaster.
- Be prepared using the list of emergency supplies to bring with you and to stockpile.
- Know how to use the safety confirmation message services.
- Multilingual flood hazard maps are being prepared sequentially.



Available on the Yokkaichi shi website
URL: <http://bousai2.city.yokkaichi.mie.jp/home/>