

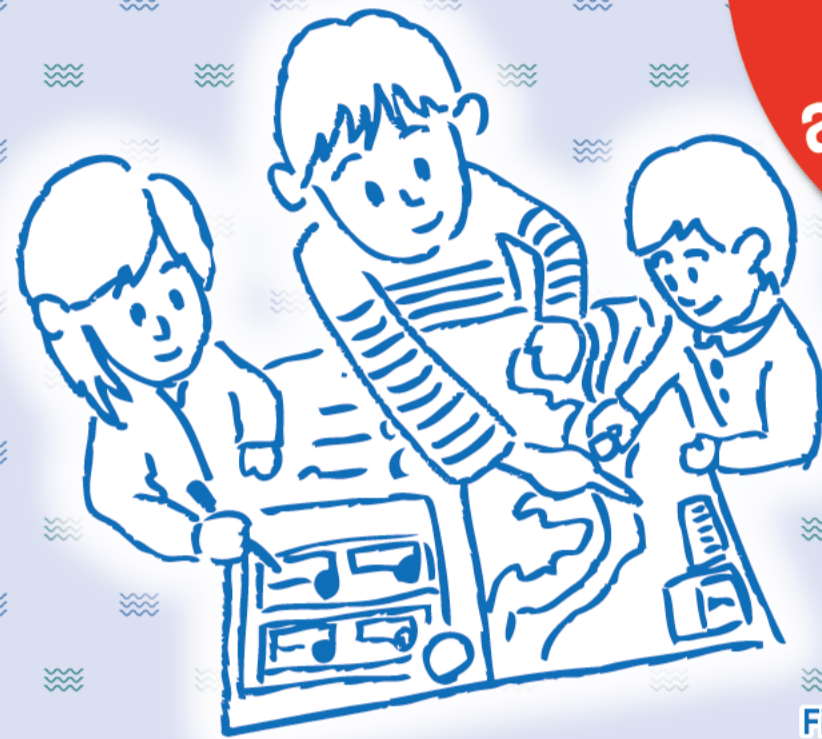
Suzuka River System Suzukagawa hasen River Utsube River Flood

Yokkaichi City Hazard Map

June 2019

Protect Your Life

If directed to begin evacuation preparation and evacuation of seniors, etc. or if an evacuation advisory is issued, escape!
It is up to you to save your life!



Find on map and fill in the following.

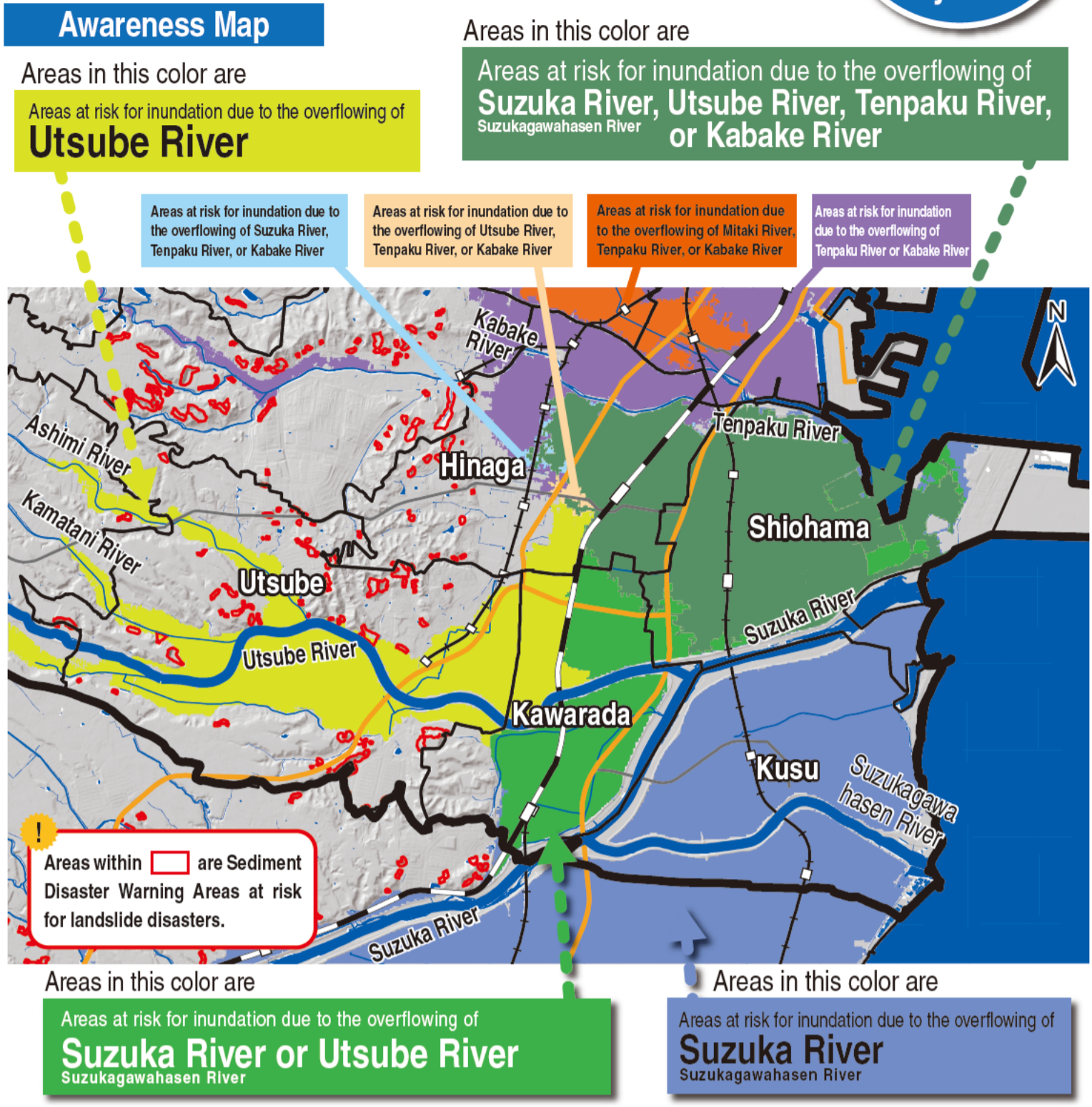
Evacuation shelter, home of a relative/friend, etc. that will not be flooded

Tall and sturdy building where you can stay even after flooding

There may be areas affected by the overflowing of rivers other than Suzuka River and Utsube River.

Check which river inundation(s) will affect you

This map is colored based on the Suzuka River System Flood-Prone Area Map, Asake River System Flood-Prone Area Map, Mitaki and Kaizo River System Flood-Prone Area Map, Tenpaku River System Flood-Prone Area Map, and Sediment Disaster Warning Area Maps.



Unforeseen events are inevitable in disasters. Areas that are not colored are also at risk. This map shows only one of many possible scenarios. It is not meant to suggest that this exact scenario will occur. Please act on your own judgment by taking not only this scenario into account.

Protect Yourself

Collect information proactively

Take initiative to gather information

Information Channels

Yokkaichi City Disaster Management Headquarters

- TV Radio
- Email Internet
- Disaster administrative radio system
- Sound truck
- Announcements by neighborhood associations, etc.

Residents

Information Sources

TV and Radio

TV: NHK 3ch (Digital terrestrial), button on TV remote (data broadcasting)

Radio: AM NHK Nagoya 1 729kHz, FM CTY-FM 76.8MHz, NHK-Tsu FM 81.8MHz, radio3 FM Mie 78.9MHz

Telephone

Disaster siren and voice broadcasting confirmation

Automated telephone response for confirming siren and voice broadcasting information. TEL: 059-351-4004

Email Notifications

Emails on evacuation information, etc. **Pre-register**

Yokkaichi City Safety and Disaster Management Email

Scan the QR code on the right or send a blank email to the email address below and follow the instructions to register.

t-yokkaichi-city@sg-m.jp

https://service.sugumail.com/yokkaichi-city/member

Emergency Alert Email (Area Mail)

Evacuation advisory and other information is sent by "Emergency Alert Email (Area Mail)" to compatible mobile phones.

* Some mobile phone models are incompatible. Please contact your mobile phone company for details.

Safety Confirmation Message Services

Disaster Emergency Message Dial 171

Phone lines get busy when a disaster occurs. You can call 171 (Disaster Emergency Message Dial) to record or play messages.

Call 171

- To leave message (recording method): Press 1, then phone number of your home, yourself, or family member in affected area. Dial from the area code. Leave message.
- To listen to message (confirmation method): Press 2, then phone number of the person you want to contact in affected area. Dial from the area code. Listen to message.

Evacuation Information

The City will announce evacuation information if evacuation is necessary. To receive the information, pre-register for the Yokkaichi City Safety and Disaster Management Email service.

Warning Level 1*	Warning Level 3	Warning Level 4	Warning Level 5
Information to prompt action	Begin evacuation preparation and evacuation of seniors, etc.*2	Evacuation advisory Evacuation order (urgent)*3	Disaster onset information
Actions residents should take	Evacuation of seniors, etc.*2 * Be ready to evacuate anytime * Evacuate seniors, etc. who need time to evacuate	Evacuation of everyone * Evacuate quickly to evacuation area	* Take optimal actions to save lives

Internet

Weather information, precipitation, river water level, tide level

Yokkaichi City Disaster Weather Information
Yokkaichi City's weather, warning and alert statuses, precipitation, river level observation data, etc.
URL: http://yokkaichicity.bosai.info

Japan Meteorological Agency
Weather warnings and alerts, typhoon information, earthquake and tsunami information, etc.
URL: http://www.jma.go.jp

BOSAIMIE.jp
Mie Prefecture's weather, warning and alert statuses, precipitation, river level observation data, etc.
URL: http://www.bosaimie.jp

Mie Office of River and National Highway
Live camera feed of Suzuka River basin (updated every 10 min.), etc.
URL: http://www.cbr.mlit.go.jp/mie/index.html

Ministry of Land, Infrastructure, Transport and Tourism's Disaster Information for River
Weather warnings and alerts, typhoon information, earthquake and tsunami information, etc.
URL: http://www.river.go.jp
Mobile URL: http://i.river.go.jp
Smart phone: http://www.river.go.jp/s/

Disaster Emergency Message Board

The Disaster Emergency Message Boards provided by NTT and mobile phone companies can be accessed if internet connection is available when a disaster occurs.

Web171 (NTT)
URL: https://www.web171.jp

SoftBank / Y!mobile
URL: http://dengon.softbank.ne.jp

NTT docomo
URL: http://dengon.docomo.ne.jp

au (KDDI)
URL: http://dengon.ezweb.ne.jp

Protect Yourself from Flooding

As a primary rule, you must evacuate to a safe location early on. If you did not escape in time, protect yourself in a location which is considered the safest under the circumstances of that place and time.

Protect Yourself

If directed to begin evacuation preparation and evacuation of seniors, etc. or if an evacuation advisory is issued, escape!

If an approaching typhoon or heavy rain due to low pressure, etc. is anticipated, evacuate as early as possible to a low flood risk area. Evacuating to a home of a relative or acquaintance, etc. is an option.

Find an evacuation shelter, home of a relative/friend, etc. that will not be flooded to evacuate to.

If you did not escape in time... **Protect Yourself**

If there is already flooding and you did not escape in time, go to a tall and sturdy building where you can stay even after flooding.

It is dangerous to walk through flooded areas. If you did not escape in time, protect yourself in a location which is considered the safest under the circumstances of that place and time.

Determine if you need to escape or can stay at home. In the former case, find a tall and sturdy building to evacuate to and stay even after flooding.

If Suzuka River or Utsube River overflows, flooding is expected to continue for three days to one or more weeks.

When evacuating, Watch Out:

- Manhole**: Floodwater is muddy, making it difficult to see where you are going. It is dangerous if covers have come off. You may fall into a manhole or drainage.
- Underpass**: Avoid using roads in low spots prone to flooding, such as underpasses or viaducts.
- Riverside**: Overflowing rivers have strong currents. In some areas, buildings may collapse or be swept away. If you hear information on evacuation, evacuate immediately.

Evacuate as early as possible to give yourself enough time

At nighttime, it is harder to hear sounds and is dangerous. If an approaching typhoon or continuous heavy rainfall is anticipated, evacuate as early as possible before it gets dark.

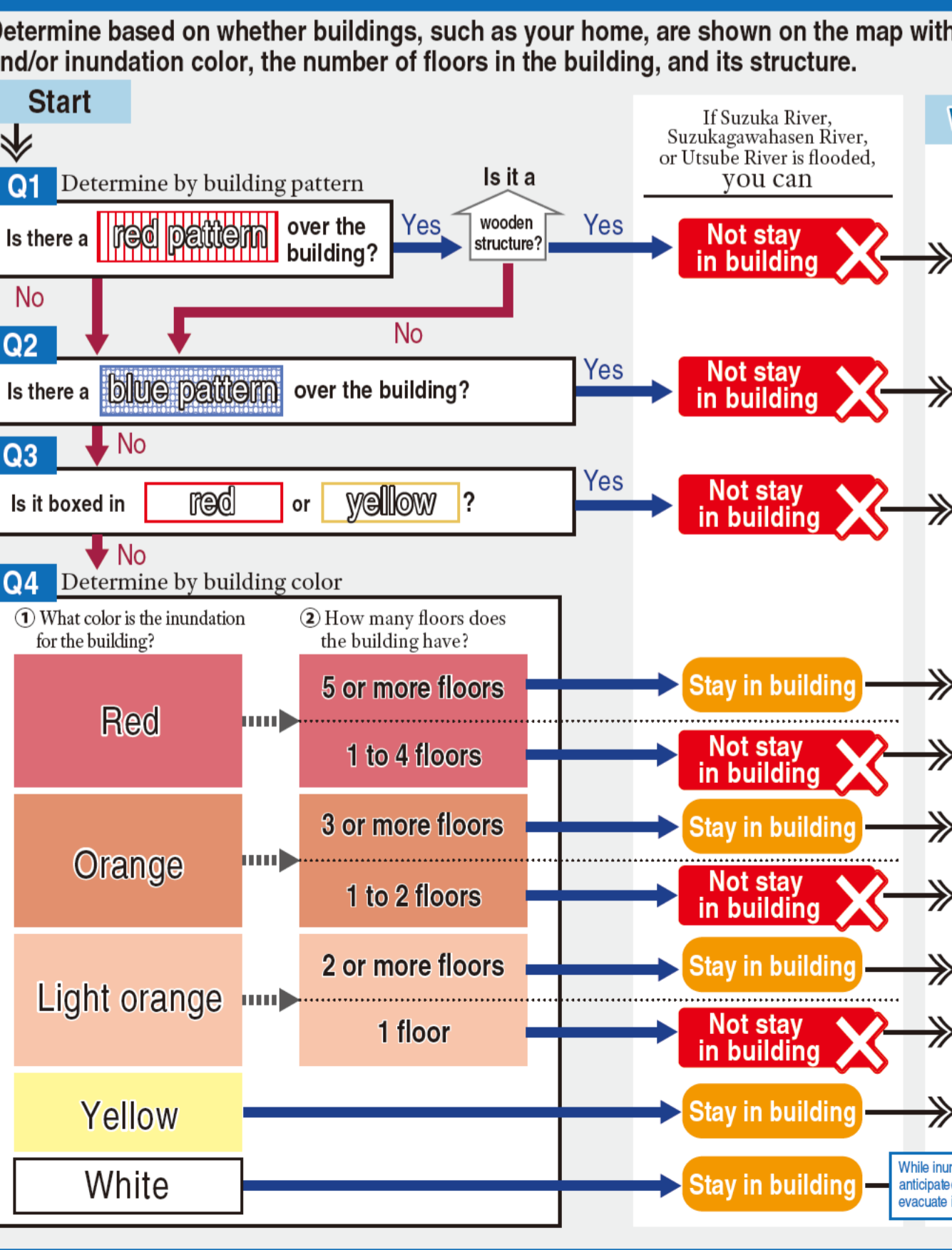
Evacuate before it gets dark

As a rule, evacuate on foot

Evacuating by car may cause traffic jams and block passage of emergency vehicles. Please be mindful that as a rule you should evacuate on foot.

Escape Map: Decision-Making Flow Diagram

See the escape map on the reverse side to determine whether evacuating to the upper floors of your home, etc. is possible if you didn't escape in time, or whether you must evacuate your home, such as to an evacuation shelter, before inundation.



See the escape map on the reverse side to find and decide where to evacuate. Write down where you will evacuate on the cover page!

Where to escape under the begin evacuation preparation and evacuation of seniors, etc. notification or evacuation advisory

Ex: Evacuation shelter or home of relative/friend, etc. that will not be flooded

Where to stay safe if you did not escape in time

Ex: Tall and sturdy building where you can stay even after flooding

If you didn't escape in time, Points to keep in mind for staying home

Take refuge above 1 floor level

You may not be able to use water, electricity, gas, toilet, etc. for around a week. Be sure you are fully ready and know that you may become isolated for a long time.

Prepare emergency supplies, such as water and food.

7 days' supply

It is dangerous to stay at flood level. Evacuate to a place where you can safely protect yourself from flooding, such as the upper floors of a building.

Check the Family Disaster Planner and the Tsunami Evacuation Map.

Check how to protect yourself from a natural disaster.
See list and prepare an emergency supply kit to bring with you and to keep at home.

Family Disaster Planner (for children), Tsunami Evacuation Map

Available on the Yokkaichi City website (Japanese only)
URL: http://bosai2.city.yokkaichi.mie.jp/home/