

Mitaki Gawa Suikei Kaizo Gawa Suikei
Mitaki Gawa Kaizo Gawa
 Kanatani Gawa & Yago Gawa
 Mitakishinsen
Yokkaichi shi Hazard Map
 June 2021

Flood

Protect Your Life
 Not only evacuation shelters
 Evacuate and respond flexibly
 based on the situation
 It is up to you to save your life!

Plan your evacuation location, which may be your home or a relative/friend's home (if risk of flooding is low)

Find on Escape Map and fill in the following.

Place for early evacuation Prior to an evacuation alert or strong rain/wind
 A relative/friend's home, evacuation shelter, etc. in non-inundated area
 (Write here)

Place to evacuate to if did not escape in time If going outside is dangerous
Tall and sturdy building where you can stay after flooding
 (Write here)

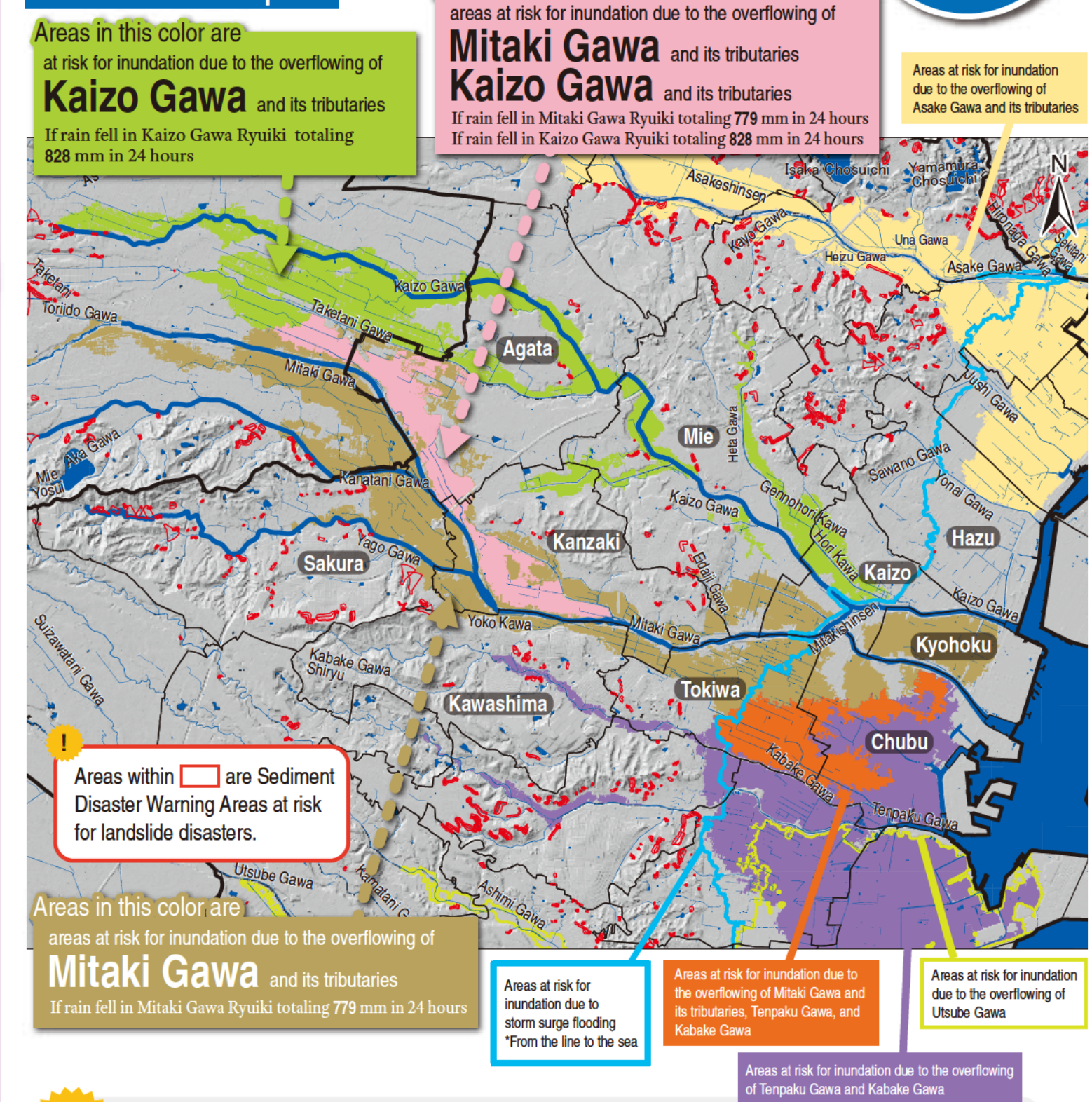
Published by: Yokkaichi shi Produced and Edited by: Yokkaichi shi Kikkanni shitsu
 Supervised by: Tohtaka Katada (Project Professor, Graduate School of Interdisciplinary Information Studies, The University of Tokyo)
 Distributed in: Tokusa chiku, Kawashima chiku, Kanzaki chiku, Sakura chiku, Mie chiku, Agata chiku, Kaizo chiku, Kyohoku chiku, Chubu chiku (Kyodo, Dowa, Chuo, Minato, Hamada) (All homes)
TEL : 059-354-8119
FAX : 059-350-3022

Anticipated disasters in addition to the overflowing of Mitaki Gawa (Kanatani Gawa, Yago Gawa, and Mitakishinsen) and Kaizo Gawa.

This map is colored based on the Mitaki Gawa Suikei, Kaizo Gawa Suikei, Asake Gawa Suikei, Tenpaku Gawa Suikei, and Suzuka Gawa Suikei Flood-Prone Area Maps, Storm Surge-Prone Area Maps, and Sediment Disaster Warning Area Maps.

Awareness Map

Use the Awareness Map to Check how the disasters will affect you



Unforeseen events are inevitable in disasters. The overflowing of rivers is not the only disaster. Areas that are not colored also face risks, such as water accumulation due to poor drainage caused by heavy rain.
Please act on your own judgment if you sense danger; do not feel bound by this scenario.

Collect information proactively

If an approaching typhoon or heavy rain due to low pressure, etc. is anticipated, weather and various other information will be announced. Make sure you stay informed and do not miss important information.

Information Channels

Yokkaichi shi Saigai Taisaku Honbu

TV Radio, Email Internet, App, Disaster administrative radio system, Sound truck, Announcements by neighborhood associations, etc.

Residents

Information Sources

Internet

Weather information, precipitation, river water level, tide level

Yokkaichi shi Bousai Kishou Jouhou
 Yokkaichi City's weather, warning and alert statuses, precipitation, river level observation data, etc.
 URL: http://yokkaichicity.bosai.info

Japan Meteorological Agency
 Weather warnings and alerts, typhoon information, earthquake and tsunami information, etc.
 URL: http://www.jma.go.jp

BOSAIMIE.jp
 Mie Prefecture's weather, warning and alert statuses, precipitation, river level observation data, etc.
 URL: http://www.bosaimie.jp

Ministry of Land, Infrastructure, Transport and Tourism's Disaster Information for River
 Weather warnings and alerts, typhoon information, earthquake and tsunami information, etc.
 URL: http://www.river.go.jp

CTY-NET Online
 Live webcam images of Mitaki Gawa, Kaizo Gawa, Kabake Gawa, etc. (refresh every 1 minute).
 URL: http://www.cty-net.ne.jp

River Water Level Information
 (Foundation of River & Basin Integrated Communications (FRBIS))
 Observed values of crisis management-type water level gauges, etc.
 URL: http://k.river.go.jp



Email Notifications

Emails on evacuation information, etc. **Pre-register**

Yokkaichi shi Anzen Anshin mail
 Scan the QR code on the right and follow the instructions to register.

PC Email
 https://service.sugumail.com/yokkaichi-city/member

Emergency Alert Email (Area Mail) (Registration not required)
 Evacuation advisory and other information is sent by "Emergency Alert Email (Area Mail)" to compatible mobile phones.
 *Some mobile phone models are incompatible. Please contact your mobile phone company for details.

Telephone

Disaster siren and voice broadcasting confirmation
 Automated telephone response for confirming siren and voice broadcasting information.
TEL 059-351-4004

TV and Radio

TV
 Digital terrestrial NHK 3ch
 Cable TV CTY *Requires subscription
 button on TV remote (data broadcasting)

Radio
 AM NHK Nagoya 1 729kHz
 FM CTY-FM 76.8MHz
 NHK-Tsu FM 81.8MHz
 radio3 FM Mie 78.9MHz

App and Internet

Evacuation and other information sent via app **Scan QR code to download app**

Yokkaichi City S Alert iPhone, iPad, Android

Obtain evacuation and other information distributed by Yokkaichi City.

Information on establishment of evacuation shelters and their congestion levels

Evacuation shelter congestion information website
 Check vacancy and congestion level of designated evacuation shelters.
 URL: https://vacan.com/area/yokkaichi-city-evacuation/evacuation-center/11

Find Out Water Level

Location	Water gauge station	River flooding risk water level	River flooding warning water level	Flood fighting corps standby water level
Mitaki Gawa (Upstream)	Takatsuno	3.00m	2.40m	1.47m
Mitaki Gawa (Midstream)	Noda	-	-	-0.84m
Mitaki Gawa (Downstream)	Nishimachi	-	-	1.21m
Kaizo Gawa (Upstream)	Mitachi	2.09m	1.78m	0.95m
Kaizo Gawa (Midstream)	Shimizu	-	-	0.42m
Kaizo Gawa (Downstream)	Suenaga	-	-	2.58m

Protect Yourself from Flooding

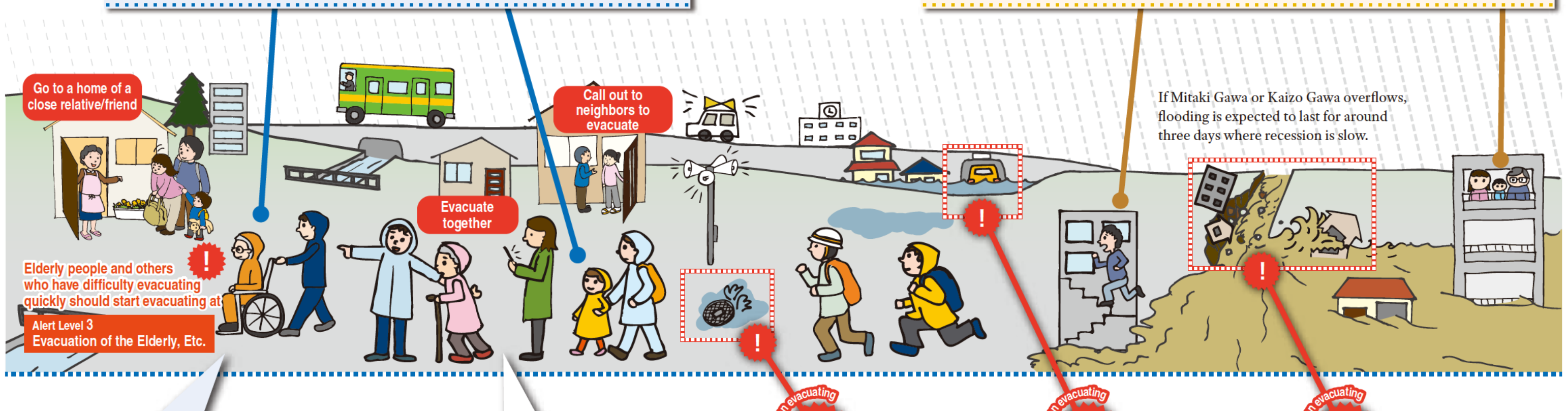
As a primary rule, you must evacuate to a safe location early on. If you did not escape in time, protect yourself in a location which is considered the safest under the circumstances of that place and time.

Protect Yourself

Evacuate early
 At Alert Level 3 Evacuation of the Elderly, Etc. or Alert Level 4 Evacuation Instruction, **be sure to escape from the affected area!**
 If an approaching typhoon or heavy rain due to low pressure, etc. is anticipated, evacuate as early as possible to a low flood risk area. Evacuating to a home of a relative or acquaintance, etc. is an option.
 Find a relative/friend's home or evacuation shelter, etc. in non-inundated area to evacuate to.

Protect Yourself

If you did not escape in time...
 Go to a **tall and sturdy building** where you can stay in after flooding has occurred
 It is dangerous to walk through flooded areas. If you did not escape in time, protect yourself in a location which is considered the safest under the circumstances of that place and time.
 Determine if you need to escape using the Escape Map on the reverse side.
 Find a **tall and sturdy building** to evacuate to and stay in after flooding has occurred.



Evacuate as early as possible to give yourself enough time
 At nighttime, it is harder to hear sounds and is dangerous. If an approaching typhoon or continuous heavy rainfall is anticipated, evacuate as early as possible before it gets dark.

As a rule, evacuate on foot
 Evacuating by car may cause traffic jams and block passage of emergency vehicles. Please be mindful that as a rule you should evacuate on foot.

Manhole or ditch
 Floodwater is muddy, making it difficult to see where you are going. Be careful not to fall into an open manhole (cover dislodged by flood) or ditch.

Underpass
 Avoid using roads in low spots prone to flooding, such as underpasses of viaducts.

Riverside
 Overflowing rivers have strong currents. In some areas, buildings may collapse or be swept away. If you hear information on evacuation, evacuate immediately.

Escape Map: Decision-Making Flow Diagram

