

Asake Gawa Suikei Asake Gawa Flood

Yokkaichi shi Hazard Map

June 2020

Protect Your Life

If directed to begin evacuation preparation and evacuation of seniors, etc. or if an evacuation advisory is issued, escape!

It is up to you to save your life!



Find on Escape Map and fill in the following.

Evacuation shelter, home of a relative/friend, etc. that will not be flooded

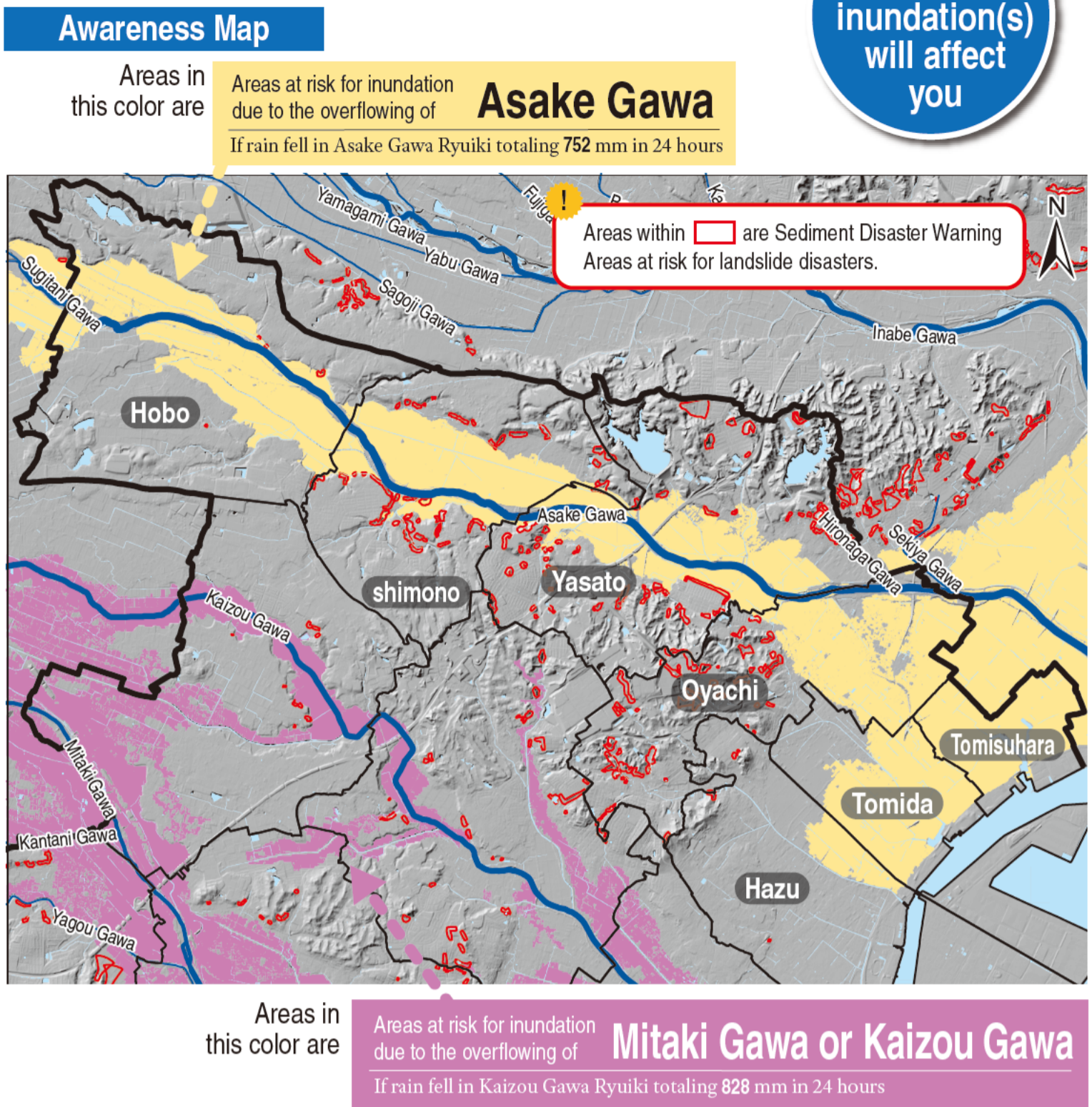
Tall and sturdy building where you can stay even after flooding

Published by: Yokkaichi shi
Produced and Edited by: Yokkaichi shi Kikikanri itsu, Institute of Social Technology, IGA Co., Ltd.
Supervised by: Toshitaka Katada (Project Professor, Graduate School of Interdisciplinary Information Studies, The University of Tokyo)
Distributed in: Hobo chiku, Shimono chiku, Yasato chiku, Tomisuhara chiku, Tomida chiku, Oyachi chiku

TEL: 059-354-8119
FAX: 059-350-3022

There may be areas affected by the overflowing of Asake Gawa.

This map is colored based on the Asake Gawa Suikei Flood-Prone Area Map, Mitaki Gawa and Kaizou Gawa Suikei Flood-Prone Area Map, and Sediment Disaster Warning Area Maps.



Use the Awareness Map to Check which river inundation(s) will affect you

Unforeseen events are inevitable in disasters. Areas that are not colored are also at risk. This map shows only one of many possible scenarios. It is not meant to suggest that this exact scenario will occur. Please act on your own judgment by taking not only this scenario into account.

Protect Yourself Collect information proactively

If an approaching typhoon or heavy rain due to low pressure, etc. is anticipated, weather and various other information will be announced. Make sure you stay informed and do not miss important information.

Information Channels

Yokkaichi shi Saigai Taisaku Honbu

- TV Radio
- Email Internet
- Disaster administrative radio system
- Sound truck
- Announcements by neighborhood associations, etc.

Residents

Take initiative to gather information

Information Sources

TV and Radio

TV

- NHK 3ch
- button on TV remote (data broadcasting)

Radio

- AM: NHK Nagoya 1 729kHz
- FM: CTY-FM 76.8MHz, NHK-Tsu FM 81.8MHz, radio3 FM Mie 78.9MHz

Telephone

Disaster siren and voice broadcasting confirmation

Automated telephone response for confirming siren and voice broadcasting information.

TEL: 059-351-4004

Email Notifications

Yokkaichi shi Anzen Anshin mail

Scan the QR code on the right or send a blank email to the email address below and follow the instructions to register.

t-yokkaichi-city@sg-m.jp

https://service.sugumail.com/yokkaichi-city/member

Emergency Alert Email (Area Mail)

Evacuation advisory and other information is sent by "Emergency Alert Email (Area Mail)" to compatible mobile phones.

* Some mobile phone models are incompatible. Please contact your mobile phone company for details.

Safety Confirmation Message Services

Disaster Emergency Message Dial 171

Phone lines get busy when a disaster occurs. You can call 171 (Disaster Emergency Message Dial) to record or play messages.

Call 171

- To leave message (recording method): Press 1, then phone number of your home, yourself, or family member (in affected area). Dial from the area code. Leave message.
- To listen to message (confirmation method): Press 2, then phone number of the person you want to contact (in affected area). Dial from the area code. Listen to message.

Evacuation Information

The City will announce evacuation information if evacuation is necessary. To receive the information, pre-register for the Yokkaichi shi Anzen Anshin mail service.

Warning Level	Warning Level 3	Warning Level 4	Warning Level 5
Information to prompt action	Begin evacuation preparation and evacuation of seniors, etc.	Evacuation advisory	Evacuation order (urgent)
Actions residents should take	Evacuation of seniors, etc.*	Evacuate quickly to evacuation area	Disaster onset information

* Take optimal actions to save lives

Internet

Weather information, precipitation, river water level, tide level

Yokkaichi shi Bousai Kishou Jouhou

Yokkaichi City's weather, warning and alert statuses, precipitation, river level observation data, etc.

URL: http://yokkaichicity.bosai.info

Japan Meteorological Agency

Weather warnings and alerts, typhoon information, earthquake and tsunami information, etc.

URL: http://www.jma.go.jp

Ministry of Land, Infrastructure, Transport and Tourism's Disaster Information for River

Weather warnings and alerts, typhoon information, earthquake and tsunami information, etc.

URL: http://www.river.go.jp

BOSAIMIE.jp

Mie Prefecture's weather, warning and alert statuses, precipitation, river level observation data, etc.

URL: http://www.bosaimie.jp

CTY-NET Online

Live webcam images of Asake Gawa, Jushi Gawa, and Yonai Gawa (refresh every 1 minute). * App required to view on smartphone.

URL: http://www.cty-net.ne.jp/

River Water Level Information (crisis management-type water level gauge)

Observed values of crisis management-type water level gauges, etc.

URL: http://k.river.go.jp

Disaster Emergency Message Board

The Disaster Emergency Message Boards provided by NTT and mobile phone companies can be accessed if internet connection is available when a disaster occurs.

Web171 (NTT)

URL: https://www.web171.jp

SoftBank / Y!mobile

URL: http://dengon.softbank.ne.jp

NTT docomo

URL: http://dengon.docomo.ne.jp

au (KDDI)

URL: http://dengon.ezweb.ne.jp

Protect Yourself from Flooding

As a primary rule, you must evacuate to a safe location early on. If you did not escape in time, protect yourself in a location which is considered the safest under the circumstances of that place and time.

Protect Yourself

Warning Level 3 If directed to begin evacuation preparation and evacuation of seniors, etc. or

Warning Level 4 if an evacuation advisory is issued, escape!

If an approaching typhoon or heavy rain due to low pressure, etc. is anticipated, evacuate as early as possible to a low flood risk area. Evacuating to a home of a relative or acquaintance, etc. is an option.

Find an evacuation shelter, home of a relative/friend, etc. that will not be flooded to evacuate to.

Call out to neighbors to evacuate

Evacuate together

Seniors and those who need time to evacuate should start evacuating under the "begin evacuation preparation and evacuation of seniors, etc." notification.

Evacuate as early as possible to give yourself enough time

As a rule, evacuate on foot

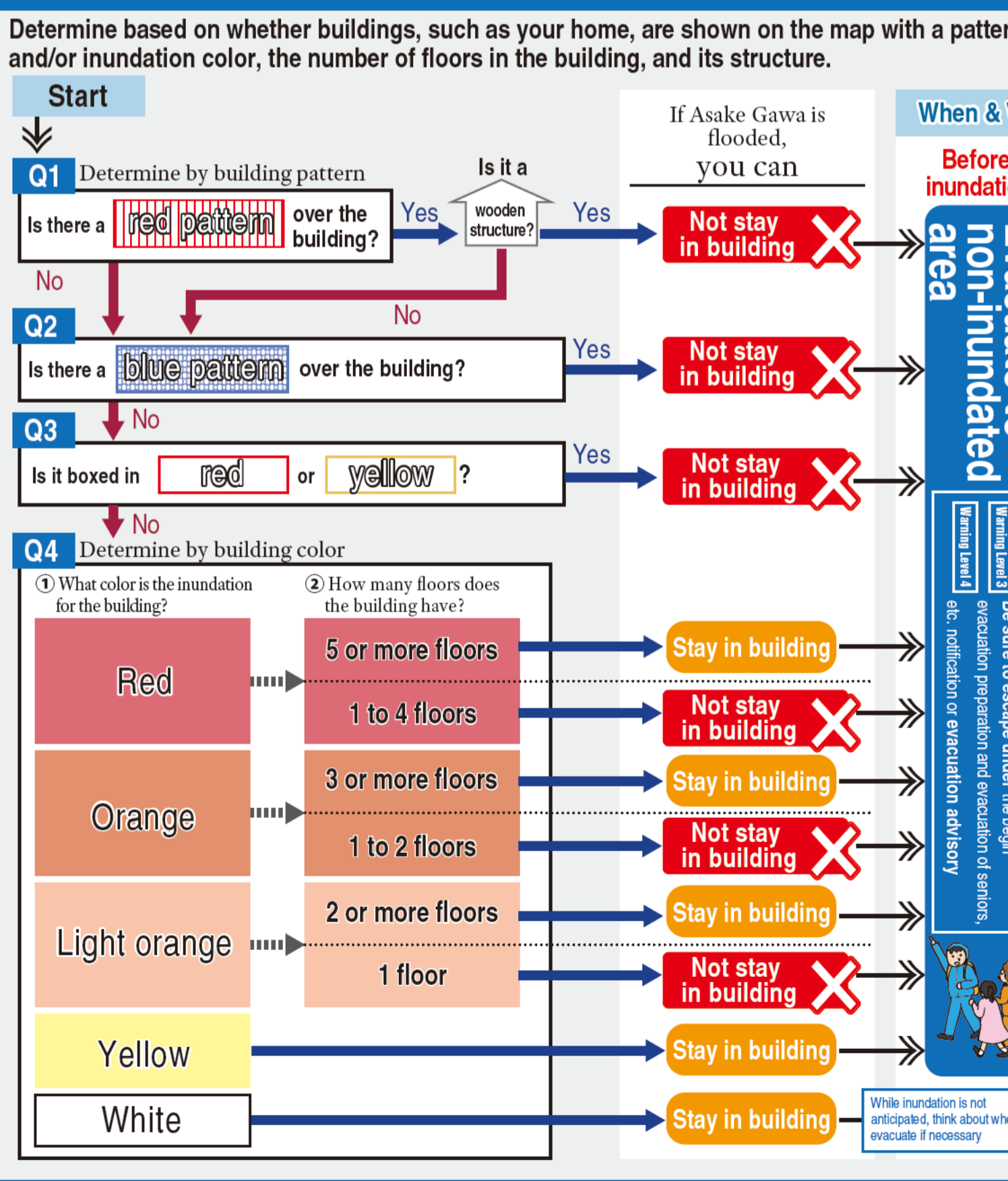
Evacuating by car may cause traffic jams and block passage of emergency vehicles. Please be mindful that as a rule you should evacuate on foot.

When evacuating Watch Out

- Manhole or ditch:** Floodwater is muddy, making it difficult to see where you are going. Be careful not to fall into an open manhole (cover dislodged by flood) or ditch.
- Underpass:** Avoid using roads in low spots prone to flooding, such as underpasses or viaducts.
- Riverside:** Overflowing rivers have strong currents. In some areas, buildings may collapse or be swept away. If you hear information on evacuation, evacuate immediately.

Escape Map: Decision-Making Flow Diagram

See the escape map on the reverse side to determine whether evacuating to the upper floors of your home, etc. is possible if you didn't escape in time, or whether you must evacuate your home, such as to an evacuation shelter, before inundation.



See the escape map on the reverse side to find and decide where to evacuate

Write down where you will evacuate on the cover page!

Warning Level 3 Where to escape under the begin evacuation preparation and evacuation of seniors, etc. notification or evacuation advisory

Ex: Evacuation shelter or home of relative/friend, etc. that will not be flooded

Warning Level 4 Where to stay safe if you did not escape in time

Ex: Tall and sturdy building where you can stay even after flooding

If you didn't escape in time Points to keep in mind for staying home

Take refuge above flood level

You may not be able to use water, electricity, gas, toilet, etc. for around a week. Be sure you are fully ready and know that you may become isolated for a long time.

Stockpile water, food, and other emergency supplies on high-up areas that won't be flooded.

7 days' supply

It is dangerous to stay at flood level. Evacuate to a place where you can safely protect yourself from flooding, such as the upper floors of a building.

Check the Family Disaster Planner and the Tsunami Evacuation Map.

Check how to protect yourself from a natural disaster.

Be prepared using the list of emergency supplies to bring with you and to stockpile.

Family Disaster Planner (for children)

Tsunami Evacuation Map

Available on the Yokkaichi shi website

URL: http://bosai2.city.yokkaichi.mie.jp/home/

YOKKAICHI SHI FLOOD HAZARD MAP